



### **Duncan Holman Services Limited**

Unit 5, Derby Dell Buildings  
Bentworth Road, Lasham,  
Alton, Hants. GU34 5RX  
Tel: 01256 381 833

MT Workshop, Ninian Road,  
Aberdeen Airport, Dyce  
Aberdeen. AB21 0PD  
01224 772 937

### **DHSL 13 Located at Lasham Workshop GU34**

FMC LMD 2000  
Serial Number MOD209096007  
Build October 1996



Previously located in LHR  
Mileage Hrs 4355  
Heater Hrs 124  
Eng Hrs 2685

Service October 2016  
Fire suppression system checks October 2016  
Boiler service October 2016  
Load and LOLER tested October 2016  
Fluid Calibrations October 2016

For sale £75,000.00 plus VAT and excluding transportation costs

*Section 4. Modular Deicer Unit Specifications*

DEICER UNIT

Overall Length .....	30 ft. 10 in. (9409 mm)
Overall Width .....	8 ft. 2 in. (2490 mm)
Overall Height Folded .....	11 ft. 10 in. (3609 mm)
Maximum Operating Speeds	
– Maximum speed with person in basket or with boom raised .....	4 mph (6.5 km/hr)
– Maximum speed with tanks full .....	25 mph (40 km/hr)
Fuel Capacity – Auxiliary Engine / Heater .....	125 Gal. (473 Liters)
Deicing Fluid Capacity .....	1800 Gal. (6814 Liters)
.....	1600 Gal. (6057 Liters) (Optional)
Anti-icing Fluid Capacity .....	200 Gal. (757 Liters)
.....	400 Gal. (1514 Liters) (Optional)
Total Tank Capacity .....	2000 Gal. (7571 Liters)
Boom Lifting Capacity .....	450 Lbs. (204 Kg.)
Boom Reach Capacity from ground to floor of basket .....	42 ft. (12802 mm)
Rotation .....	350° (± 175° From Forward Position)
Maximum Working Height .....	46 ft. (14021 mm)
.....	51 ft. 6 in. (15951 mm) (Optional)
Maximum Side Reach .....	31 ft. (9449 mm)
Load Test with Boom in Position of Maximum	
Tipping Moment with Tank and Spring .....	675 Lbs. (306 Kg.)
Sound Pressure Level	
– Chassis Cab Drivers Seat .....	75dB(A)
– In Basket .....	75dB(A)
– Ground Control Station .....	84dB(A)
Vibration Level	
–Acceleration Value to Arms .....	Does not exceed 8.2 ft/s <sup>2</sup> (2.5 m/s <sup>2</sup> )
–Acceleration Value to Body .....	Does not exceed 1.6 ft/s <sup>2</sup> (0.5 m/s <sup>2</sup> )
Approximate Weight of Vehicle	
with Empty Tanks .....	34,623 Lbs. (15705 Kg.)
Approximate Gross Weight of Vehicle with Full Tanks .....	52,692 Lbs. (23901 Kg.)

**NOTE:** Weight of vehicle will vary with chassis type and available options.

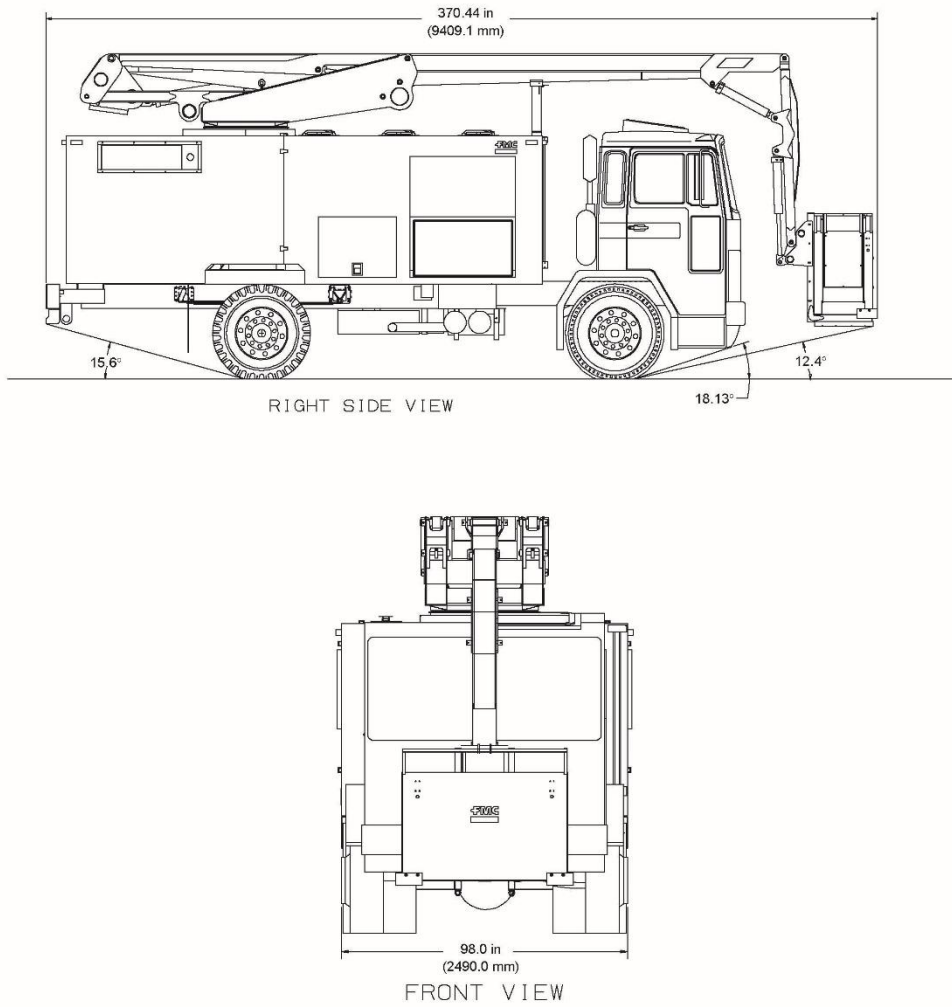


Figure 2  
UNIT DIMENSIONS

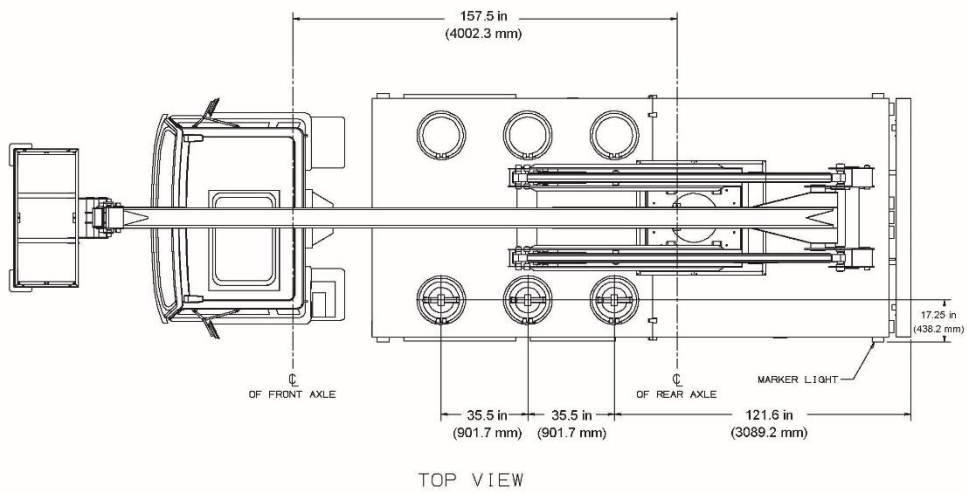


Figure 3  
UNIT DIMENSIONS

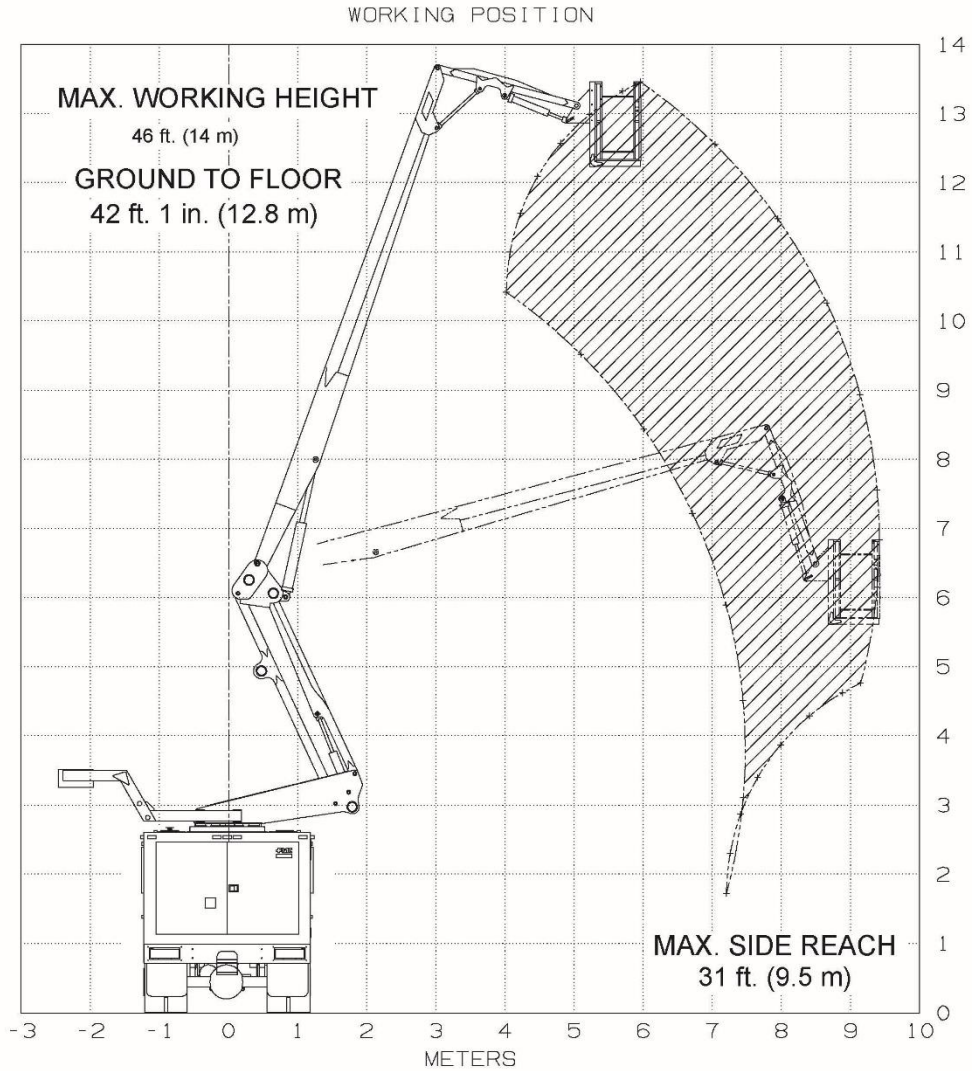


Figure 4  
BOOM REACH CHART